



# DEKO FG Fire

## Fire Classified Fully Glazed Partition

Slim, single layer fully glazed partitions up to EI 60 fire requirements in an elegant aluminium design.

DEKO FG Fire can be installed as whole glazed partitions or as individual glazed sections in concrete or drywalls.

### The partition

The DEKO FG Fire glazed partition is available with profiles against adjoining partition, ceiling and floor as well as clear fire rated glass and black fire seals running vertically between the glazed elements.

The glazed partition is classified as EW 30, EW 60, EI 30 and EI 60 fireproof structure according to the latest European Standard EN 1364-1. The glass provides a sound reduction of up to 43 dB depending on the thickness of the glass installed.

DEKO FG Fire is CE-marked in compliance with ETA-10/0224 and third-party certified by Dancert AVS.

All visible profiles are supplied as standard in natural anodised aluminium – but can also be supplied powder coated in other colours as required.

As an alternative to DEKO FG Fire, partitions can be constructed as DEKO FG with standard toughened glass with dedicated sprinkler system or as DEKO BK with aluminium frames and fire rated glass. Both alternatives comply with EI 60 fire requirements.

### Doors

It is possible to build fire rated doors in aluminium frames into DEKO FG Fire – both as single and double doors. The partitions can be fitted with DEKO Doors which are available as solid doors or glazed doors in wood or aluminium frames.

### Decoration

Film with striped or patterned designs or text can be applied to DEKO FG Fire – as it can to all DEKO's glazed partitions – to give the whole interior a uniform look.



DEKO partitions ltd  
Maarkaervej 11, DK-2630 Taastrup, Denmark

Tel: +45 43 55 77 11 · Fax: +45 43 55 77 13  
[www.deko.com](http://www.deko.com)

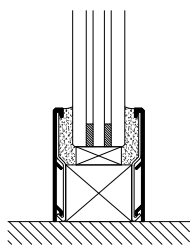


## Type Summary

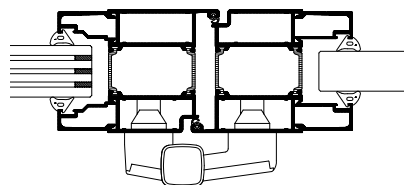
Type	Partition Thickness (mm)	Glazed Module (number)	Glazing Sizes (mm)	Weight (kg/m <sup>2</sup> )	Airborne Sound Insulation (Rw)	Fire Resistance
FG Fire EW 30	37	1	20	46	39 dB <sup>1</sup>	EW 30
FG Fire EI 30	37-40	1	20 (23)	46, 52	39 (42) dB <sup>1</sup>	EI 30
FG Fire EW 60	37-40	1	20 (23)	46, 52	39 (42) dB <sup>1</sup>	EW 60
FG Fire EI 60	48	1	31	69	43 dB <sup>1</sup>	EI 60

1) The airborne sound insulation of the glazed element depends, among other things, on the type of glass installed.

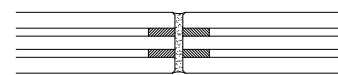
## Details



Floor, ceiling, and abutment



Aluminium glazed door



Sealed joint

For more detailed drawings and technical information, see [www.deko.com](http://www.deko.com)