

Product Design: FreeWall2 and Frisco. Steelcase Brobeck - www.brobeckdesign.de and: Andras Stuppler - www.stupplersociales.com / 18 Free Lounge: Steelcase - www.steelcase.com / Please ask chair: n/p/k Industrial Design / Think: Glen Oliver Low - C3253

Steelcase

steelcase.com

Europe Espace Européen de l'Entreprise . 1, allée d'Oslo . BP 40033 Schiltigheim . 67012 Strasbourg Cedex . France > tel: +33 3 88 13 30 30 > fax: +33 3 88 28 31 78

North America 901, 44th Street . Grand Rapids MI 49508 . USA > tel: +1 616 247 27 10 > fax: +1 616 246 40 40

Asia Pacific & India 4th floor, N32 Kowa Bldg . 5-2-32 Minami-Azabu . Minato-Ku . Tokyo 106-0047 . Japan > tel: +81 3 3448 9611 > fax: +81 3 3448 9617

Latin America 901, 44th Street . Grand Rapids MI 49508 . USA > tel: +1 616 247 27 10 > fax: +1 616 246 40 40

Middle East & Africa Design House unit A2 . PO Box 502596 Dubai Media City . Dubai . UAE > tel: +971 4 369 7838 > fax: +971 4 369 7837

FreeWall2
FreeWall2

FreeWall2 – Freedom for your office



DM689UK 10/08 © 2008 Steelcase® All rights reserved. All paper products made by Omega without chlorine. ♻️ 100% recycled paper. Printed in France by OTT Imprimaris - Wasselonne.

B3220





FreeWall2

Thanks to Steelcase's innovative products and room solutions, customers around the world are able to tap in to the potential of their businesses and human resources. This successful use of work space is the result of intensive research and user observation. The FreeWall2 partitioning system was developed by us in response to user and company needs.

FreeWall2 brings freedom to your office, providing you with infinite possibilities, whether you need a single workstation or want to create workspaces for small or large teams, whether you want to support innovate work styles with FreeWall2 Bench or whether you want to partition rooms.

FreeWall2 partitions and connects at the same time. It offers ideal cable management and linkage facilities, plus it enables you to define your own acoustic and visual screening preferences.

FreeWall2 lets you create efficient working landscapes.

FreeWall2 – **Freedom** for your **office**



FreeWall2



FreeWall2

Intelligent Design

FreeWall2 boasts a wide range of technical features: Large-size, horizontal interconnecting cable channels, user-friendly power and IT connectivity, tool-free height-adjustability of shelves and organisational elements. Quick and effortless mounting and panelling replacement. With FreeWall2, no wish goes unfulfilled.



Perfectly adaptable

Be it a single workstation or team area – FreeWall2 adapts perfectly to the user: height-adjustable shelves with no need for tools, customised visual and acoustic privacy. Space for organisational aids and technical equipment. Additional storage space on 3rd level. Ideal conditions for work and space efficiency.

An unbeatable argument for installing FreeWall2 is its **cable management** facility with lots of room and useful features. Next argument: **connectivity**. Thanks to both of these, you no longer have to depend on building infrastructure. Placed behind or next to each other, standing alone or linked together, FreeWall2 lets you create ideal teamwork areas. At the same time, you save space through shared use of equipment.



B2144



B3221



Welcome

FreeWall2 in reception areas: an attractive opportunity for displaying information about your business or products. An elegant screen for waiting areas.



FreeWall2 Bench

FreeWall2 Bench is a comfortable stopover point for guests or employees just briefly passing through. There is always a free space here. The e-box and work top offer easy power and IT connectivity. A pleasant solution for users and a space-saving, cost-effective solution for you.



B3223

Flexibility for your work



B2128

FreeWall2 offers you flexibility. It accommodates your work materials and technical equipment. This makes your desk a free (and mobile) space for project work and discussions. You can easily alternate between individual and team work – while keeping all important things within arm's reach.



B2110



B2107



B2106

“Customised” FreeWall2

Never has it been simpler to fulfil individual needs and preferences than it is with FreeWall2: a wide range of panelling offers visual and acoustic privacy to suit specific needs. This provides greater privacy and enhances concentration.

Simple, tool-free shelf adjustment at 50mm intervals. The ultimate in ergonomics! A real space and time saver. This combination of features results in work efficiency. And a wide range of colours and materials for the ultimate in wellbeing.



Translucent



Acoustic



Pleated Blind



Exposed to view



Visual privacy in sitting position
Exposed to view in standing position



Permanent visual privacy

Intelligent features

The deep cable channel with its enormous capacity supports neat cable management, such as the cable bag for cable slack and cable brackets. The cable channel is accessible from both sides, without the need for tools. It also supports connectivity at any point you choose. Even with junctions, a single base or

an entrance from the top rail is enough, as FreeWall2 supports concealed, horizontal interconnecting wiring through several FreeWalls linked together. An optional e-box built into the monitor shelf provides each user with quick and simple power and IT connectivity.



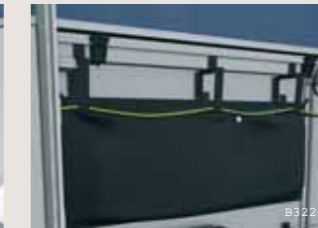
Cable management



Hinged VDU shield



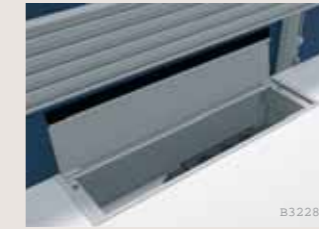
Large cable brackets



Cable bag



E-box



E-box open

Organisational elements



Orga panel



Vase holder



Printer shelf



CPU holder



Angled shelf



Book ends



Shelf brackets



"Level" lamp

Assembly



45° linkage



Linear linkage



Quick-release VDU shield



Vertical cable clip

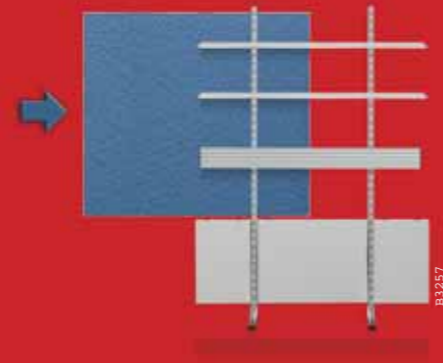


Height adjustable in 50mm increments

Tailored to suit **your** taste

Design your workspace to suit your own taste. With its multiple colours and materials, FreeWall2 blends harmoniously into any environment. It can also be used as an acoustic

component.
A word about usage: FreeWall2 panels are very simple to replace if you wish to change colours or function.



Pleated blind



Visual privacy/Sound absorption



Fabric: Lucia DB 45
Frame: Pearl alu silver ZS



Fabric: Lucia DB 14
Frame: Pearl champagne ZF



Fabric: Lucia DB 53
Frame: Pearl slate ZX



Fabric: Lucia DB 45
Frame: Pearl slate ZX



Fabric: Tec DH 66
Frame: Pearl snow ZW



Fabric: Tec DH 67
Frame: Pearl alu silver ZS



Fabric: Tec DH 61
Frame: Pearl alu silver ZS



Fabric: Tec 73
Frame: Pearl alu silver ZS



Fabric: King 4206
Frame: Pearl alu silver ZS



Fabric: King 4210
Frame: Pearl alu silver ZS



Fabric: King 4214
Frame: Pearl alu silver ZS

Glass



Glass
Frame: Pearl alu silver ZS

Laminate/wood veneer



Panel: American walnut NU
Frame: Pearl alu silver ZS

The above colours are a sample selection from the FreeWall2 colour range. Colours subject to change. Print variations possible.

FreeWall2 system

Wall

- A Horizontal profile
- B Vertical profile
- C Panelling

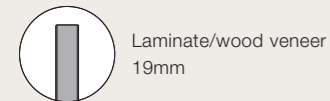
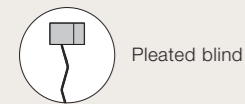
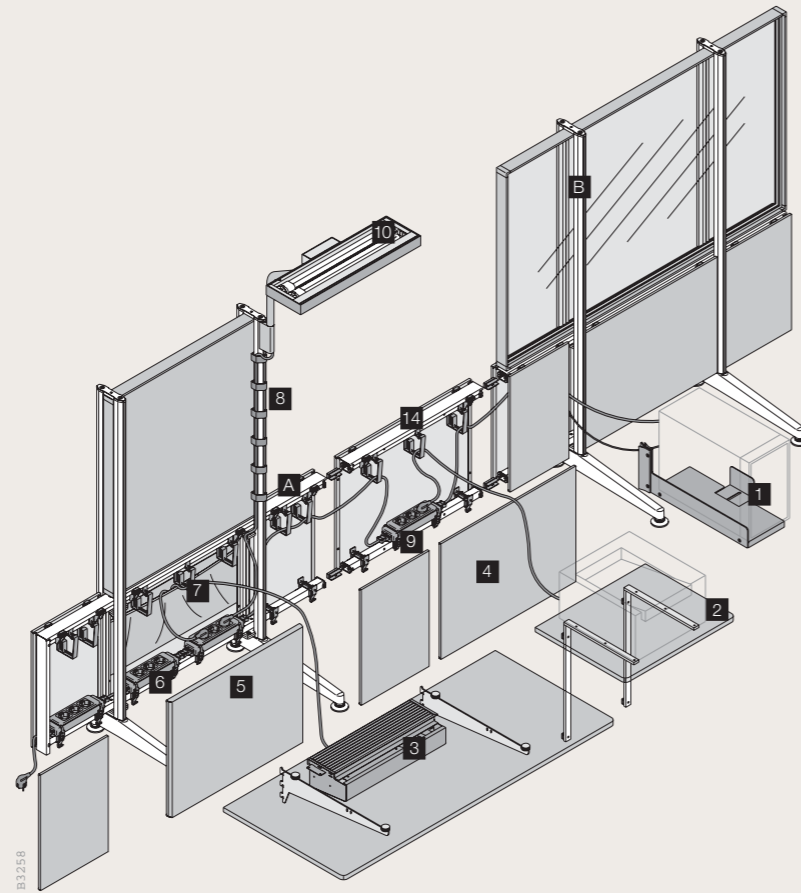
Leg piece

- Free-standing
- G 1-sided, 500mm
- H 1-sided, 600mm
- I 2-sided, 1000mm

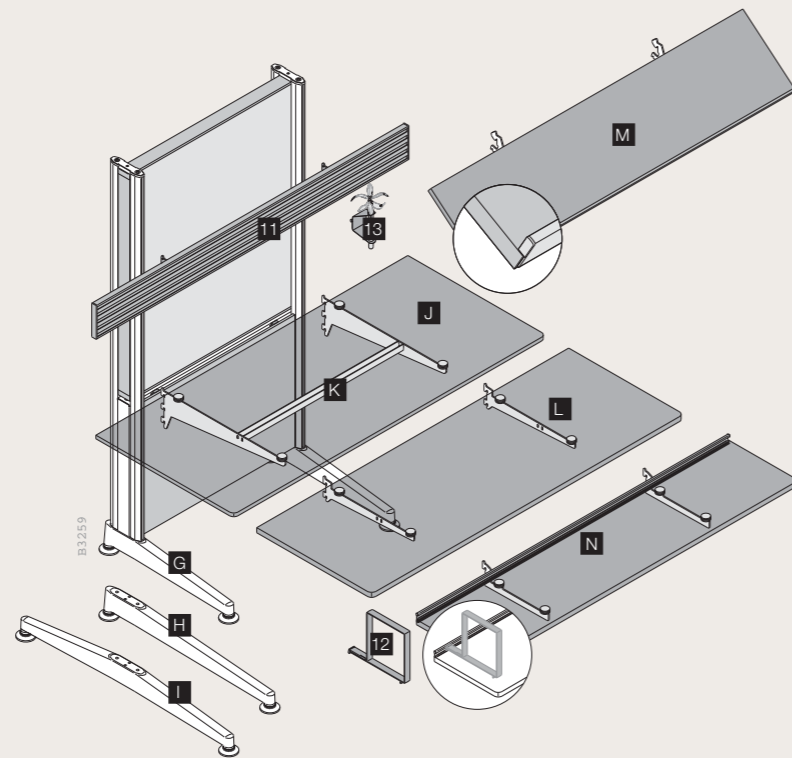
Shelf/Tops

- J Shelf 60 TechTop
- K Crosspiece for shelf 40/50/60 TechTop
- L Shelf 40 Laminate/wood veneer
- M Shelf 34 with aluminium profile on front edge
- N Shelf 40 with aluminium profile for book ends

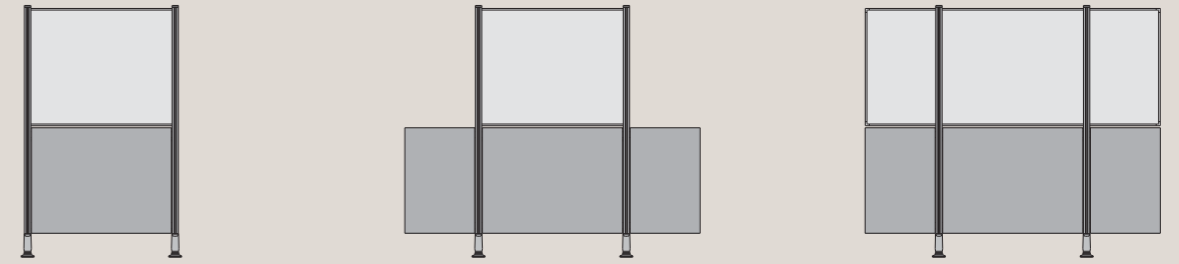
- 1 CPU holder
- 2 Printer table
- 3 E-box
- 4 VDU shield, standard
- 5 VDU shield, XXL
- 6 Power socket
- 7 Cable bracket
- 8 Cable holder
- 9 Little helper (universal holder)
- 10 "Level" lamp
- 11 Orga panel
- 12 Book end
- 13 Vase holder
- 14 Linkage



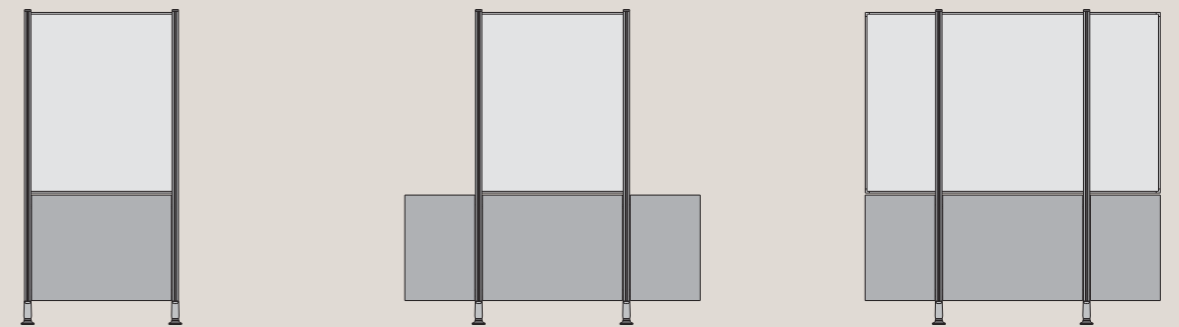
B3260



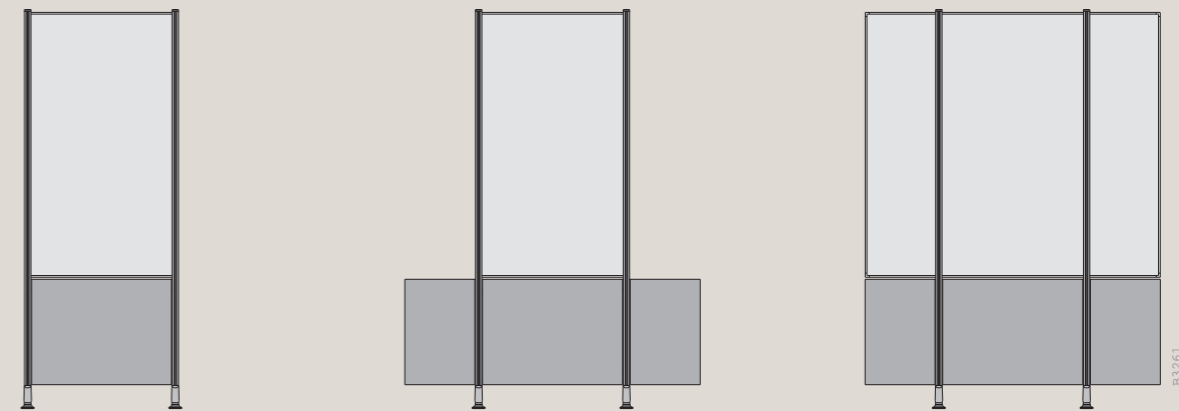
Dimensions



Height mm	1193	1193	1193
Height FH	3	3	3
Width mm	730	730/1400	1400



Height mm	1493	1493	1493
Height FH	4	4	4
Width mm	730	730/1400	1400



Height mm	1893	1893	1893
Height FH	5	5	5
Width mm	730	730/1400	1400

Dimensions given in mm and FH (File Height)

What we stand for

For decades, Steelcase has been setting trends in the office furniture industry – not only with its range of products, but also with its comprehensive range of services, from major projects and advice through to furniture management.

The development of innovative solutions is the result of user observations and research, as well as in-house and external studies conducted jointly with renowned universities and institutes, specialising in all facets of work, organisation and ergonomics, etc. Steelcase has used this knowledge to develop people-friendly and environmentally sustainable work spaces which harmoniously combine architecture, furnishings and technology.

Office spaces become strategic resources for achieving company goals.

In developing its products, Steelcase has focused on quality from the very outset. Our management systems comply with international quality and environmental standards (ISO 9 000 and ISO 14 000). This is how we guarantee that all our customers around the world receive the same standard of product and service quality.

Our stringent testing processes guarantee product durability and safety. Our products frequently surpass official standards. This enables us to provide international product guarantees of up to 8 years.

Steelcase and the environment

Over and above exceptional quality, Steelcase also offers you tried and tested environmentally friendly products. We have made it our duty to provide for the needs of the present without depriving future generations of the ability to meet their own needs.

Sustainable development means:

- Using resources sparingly; using recycled materials
- Increasing product durability
- Simplifying maintenance
- Reducing product weight and volume, thus cutting down on shipment costs
- Improving recycling capacity, thus cutting down on disposal costs.

Your **success** deserves a **Steelcase** office



Steelcase