

# Heugya 530

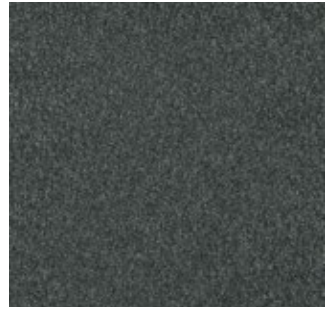




5051 Zinc



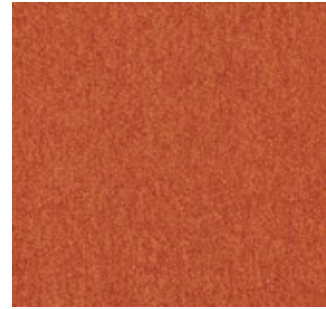
5052 Smoke



5057 Basalt



5058 Black



5065 Orange



5066 Opera



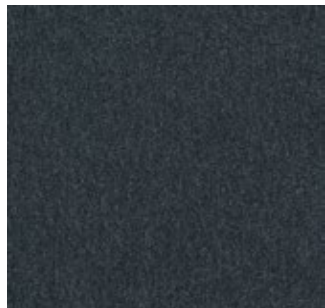
5069 Lobelia



5070 Blue Moon



5053 Carbon



5054 Twilight



5059 Sand



5060 Taupe



5063 Ginger



5064 Garam Masala



5067 Santorin



5068 Cobalt



5055 Silver



5056 Dolphin



5061 Chocolate



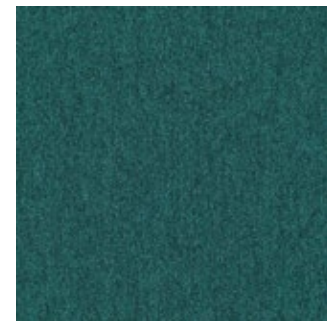
5062 Volcano



5071 Lime



5072 Sycamore



5073 Ivy



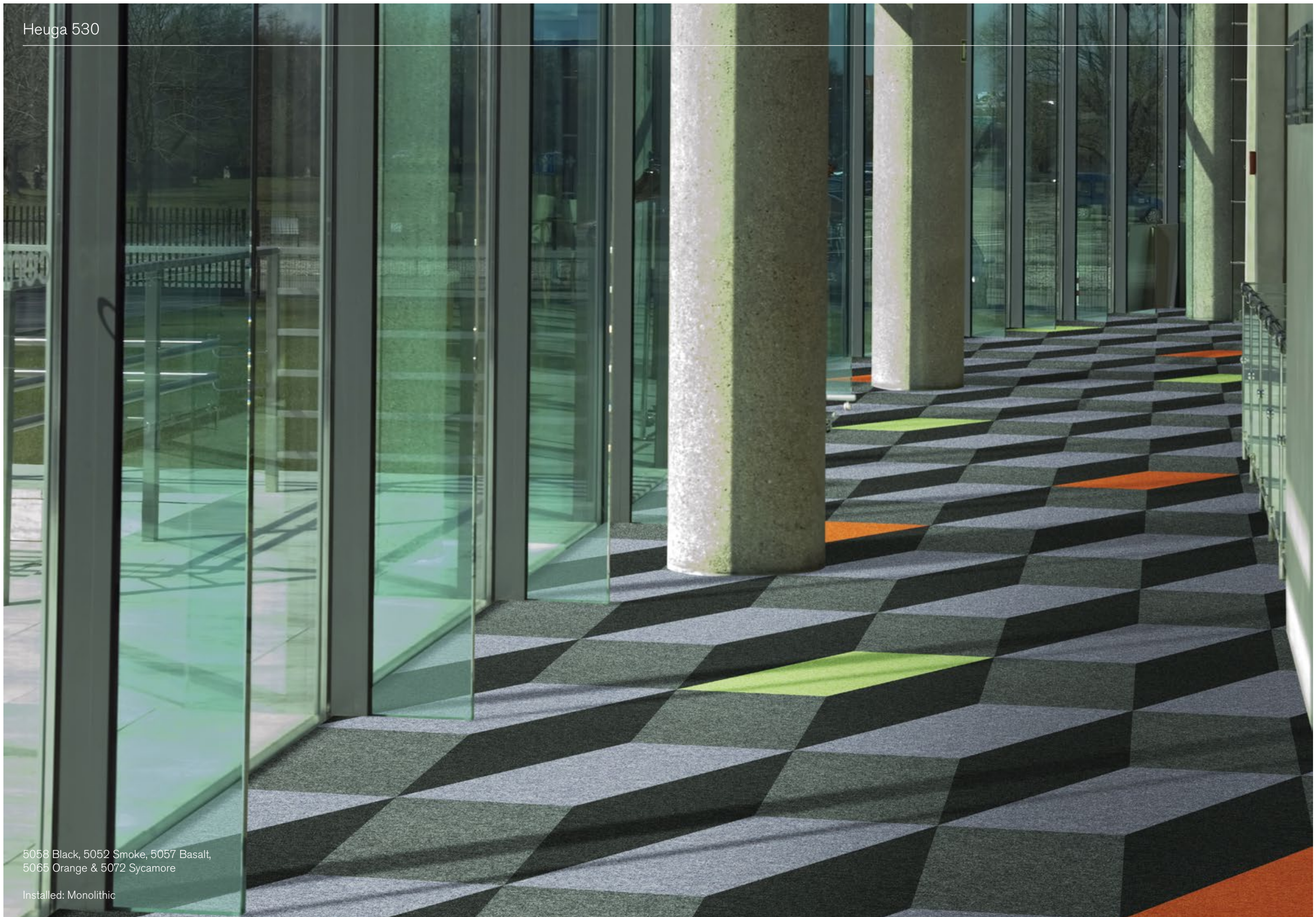
5074 Midnight







Heuga 530



5058 Black, 5052 Smoke, 5057 Basalt,  
5065 Orange & 5072 Sycamore

Installed: Monolithic







# Technical Specifications

<b>Product Definition</b>	Tufted Plain Textured Loop Tile
Konstruktion	Getuftete texturierte Schlingen-Qualität
Descripción	Moqueta modular tufting bucle
Description	Dalle de moquette à velours tufté bouclé texturé
Type	Getufte gestructureerde bouclé
Descrizione	Bouclé tufted a grosso riccio

<b>Pile Material</b>	100% BCF Nylon
Polfasermaterial	100% Polyamid
Composición Fibra	100% Poliamida BCF
Composition	100% Polyamide BCF
Poolmateriaal	100% Polyamide BCF
Fibra	100% Poliammide BCF

**Pile Yarn Weight** / Poleinsatzgewicht / Peso Fibra / 660g/m<sup>2</sup> ± 5%

Poids de fibre / Poolinzetgewicht / Peso Felpa

**Effective Pile Yarn Weight** / Polschichtgewicht / Peso 400g/m<sup>2</sup> ± 10%

útil de fibra / Poids de fibre utile Effectief poolgewicht /

Peso felpa effettivo

**Total Weight** / Gesamtgewicht / Peso Total Poids total / 4325g/m<sup>2</sup> ± 7,5%

Totaalgewicht / Peso Totale

**Pile Height** / Polschichtdicke / Altura Fibra / 3,6 mm ± 0,3 mm

Hauteur de la fibre / Poolhoogte / Altezza Felpa

**Total Thickness** / Gesamtdicke / Espesor Total / Epaisseur 7,3 mm ± 0,3 mm

totale / Totale dikte / Altezza Totale

**Gauge/Ends 10 cm** / Teilung x 10 cm / Galga x 10 cm / 1/10 – 39,5

Jauge-Rangs par 10 cm / Rijen per 10 cm /

Serraggio x 10 cm

**Tufts per m<sup>2</sup>** / Noppenzahl/m<sup>2</sup> / Puntadas m<sup>2</sup> / 106,650 ± 5%

Densité du tuft par m<sup>2</sup> / Aantal noppen per m<sup>2</sup> /

Densità Punti

**Backing Type** / Rückenkonstruktion / Soporte / Graphlex®

Sous-couche / Ruguitvoering / Sottofondo

**Wear Classification** / Beanspruchungsklasse / Heavy Contract (EN 1307)

Clasificación al tráfico / Classement Gebruiksintensiteit / Class 33 / LC2

Resistenza all'usura

**Style** 60530

5m<sup>2</sup> - 20 tiles per box (50 x 50 cm ± 0,2%)

**Radiant Panel** / (EN ISO 9239/1)

Schwerentflammbarkeit

Euroclass Bfl s1 (EN ISO 13501)

**Hot Metal Nut**

Pass, low radius of effects

of ignition (BS 4790)

**Dimensional Stability** / Dimensionsstabilität ≤ 0,2% (ISO 2551 / EN 986)

Estabilidad Dimensional / Stabilité dimensionnelle

Dimensionele stabiliteit / Test Stabilità dimensionale

**Sound Absorption**

<b>125Hz</b>	<b>250Hz</b>	<b>500Hz</b>	<b>1000Hz</b>	<b>2000Hz</b>	<b>4000Hz</b>
0.01	0.03	0.08	0.17	0.34	0.42

EN 14041

CE

DOP: 1037/112742

textile floor covering

EN 1307

EF74A558

BREEM

Cert. ENP 477

NF SUPEC

Heuga 530 PD n° 318T-005.1

Monolithic Quarter Turn

28dB ≥ 2,4 6-7 0.20

Bfl-s1 DS ≤10%Ω

## Light Values

Product	Colour No	Colour Name	L Value*	Y Value*
<b>Heuga 530</b>	5051	Zinc	47.4	16.3
	5052	Smoke	38.7	10.5
	5053	Carbon	30.2	6.3
	5054	Twilight	24.9	4.4
	5055	Silver	47.0	16.0
	5056	Dolphin	35.8	8.9
	5057	Basalt	30.3	6.3
	5058	Black	23.7	4.0
	5059	Sand	52.2	20.3
	5060	Taupe	40.9	11.8
	5061	Chocolate	29.5	6.1
	5062	Volcano	27.0	5.1
	5063	Ginger	54.1	22.0
	5064	Garam Masala	41.5	12.2
	5065	Orange	41.7	12.3
	5066	Opera	32.6	7.4
	5067	Santorin	45.6	15.0
	5068	Cobalt	35.9	9.0
	5069	Lobelia	27.2	5.2
	5070	Blue Moon	27.6	5.3
5071	Lime	55.9	23.8	
5072	Sycamore	50.3	18.7	
5073	Ivy	28.5	5.6	
5074	Midnight	30.2	6.3	
5225	Cornflower	30.43	6.4	
5226	Midnight	27.05	5.1	

\* **Light Value:** L Value = L according to CIE L\*a\*b\* colour space, Y Value = Light Reflectance Value according to BS 8493

**Lichtreflexionswerte:** L-Wert = L gemäß CIE L\*a\*b\* Farbspektrum, Y-Wert = Lichtreflexionswert gemäß British Standard BS 8493

**Valores de Reflectancia de Luz:** Valor L= L según CIE L\*a\*b\* espacio de color, Valor Y = Valor de reflectancia de luz según el estándar británico BS 8493

**Valeurs concernant la lumière:** Valeur L = L faisant référence à la méthode CIE L\*a\*b\* pour la couleur, Valeur Y = Valeurs de réflectance de la lumière selon le British Standard BS 8493

**Licht waarden:** L Waarde = L volgens CIE L\*a\*b\*kleurruimte, Y Waarde = Licht Reflectie Waarde volgens BS 8493

**Indici di riflettanza alla luce:** Indice L= L secondo CIE L\*a\*b\* colour space, IndiceY= Indice di riflettanza alla luce secondo la norma BS 8493

# Environmental Data Sheet

Construction			
Yarn system	100% BCF PA 6.6		
Backing system	Graphlex®		
Recycled Content	Total	Pre consumer	Post consumer
Product average	<b>46,24%</b>	46,24%	0,00%
Yarn	<b>0,00%</b>	0,00%	0,00%
Recycled content can be subject to differences between colours. See details for individual colours on next page.			
Carbon Footprint			
Global Warming Potential (kgs CO2 equivalents/sq meter)			
Full life-cycle carbon footprint (following our EPD results or EPD calculation method)	Raw materials and Production:	10.0 kg CO <sub>2</sub> eq./m <sup>2</sup>	
	Delivery and installation:	0.31 kg CO <sub>2</sub> eq./m <sup>2</sup>	
	Use (10 years):	2 kg CO <sub>2</sub> eq./m <sup>2</sup>	
	End of life (waste to energy):	4.5 kg CO <sub>2</sub> eq./m <sup>2</sup>	
	TOTAL (10 years' lifetime):	16.81 kg CO <sub>2</sub> eq./m <sup>2</sup>	
CO <sub>2</sub> compensation	Carbon neutral Cool Carpet® is optional		
Manufacturing			
Location	Scherpenzeel, NL		
	Factory is certified ISO 14001 since 1996 and ISO 9001 since 1990		
Installation Impacts			
TacTiles™	Optimised for glue-free installation with TacTiles™ connectors with virtually zero VOCs		
Installation Waste	In a typical installation* using the installation method below:		
	Quarter turn – 3-4% installation waste		
	Monolithic - 3-4% installation waste		
	For reference: 2 metre wide broadloom typically generates 7-10 % installation waste		
* In a rectangular building, installed before walls.			
End-of-life			
Alternatives to landfill	Reuse: Can be cleaned and reused in a non-critical location to extend its useful life		
	Recycling: Can be returned through the Interface ReEntry scheme and be re-used as raw material in new carpet tiles		
	Waste-to-Energy: Can be incinerated in appropriate waste to energy plant		
Indoor Air Quality			
GUT (Gemeinschaft umweltfreundlicher Teppichboden)	The product passes all requirements of GUT's testing criteria regarding hazardous substances, emissions and odour. GUT PRODIS Certificate no. EF74A558		
CRI (Carpet & Rug Institute)	Compliant to the requirements of the Green Label Plus programme.		
Compliance to Green Building Schemes			
See next page to check how our products contribute to the main green building certification schemes (BREEAM, LEED, HQE and DGNB)			
Type III Environmental Product Declaration			
EPD according to ISO 14025	This product has a type III Environmental Product Declaration, <a href="#">EPD-IFF-2011311-E</a>		

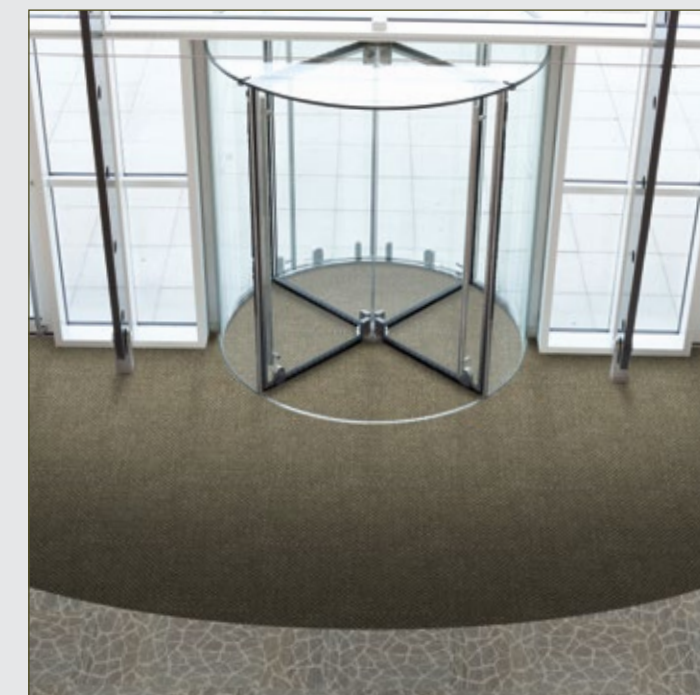
Recycled content – colour level						
Colourway	Total recycled content	Pre consumer recycled content	Post consumer recycled content	Yarn recycled content	Yarn pre consumer recycled content	Yarn post consumer recycled content
5051 Zinc	48,18%	48,18%	0,00%	0,00%	0,00%	0,00%
5052 Smoke	48,18%	48,18%	0,00%	0,00%	0,00%	0,00%
5053 Carbon	44,59%	44,59%	0,00%	0,00%	0,00%	0,00%
5054 Twilight	44,59%	44,59%	0,00%	0,00%	0,00%	0,00%
5055 Silver	44,59%	44,59%	0,00%	0,00%	0,00%	0,00%
5056 Dolphin	44,59%	44,59%	0,00%	0,00%	0,00%	0,00%
5057 Basalt	44,59%	44,59%	0,00%	0,00%	0,00%	0,00%
5058 Black	44,59%	44,59%	0,00%	0,00%	0,00%	0,00%
5059 Sand	48,18%	48,18%	0,00%	0,00%	0,00%	0,00%
5060 Taupe	44,59%	44,59%	0,00%	0,00%	0,00%	0,00%
5061 Chocolate	44,59%	44,59%	0,00%	0,00%	0,00%	0,00%
5063 Ginger	48,18%	48,18%	0,00%	0,00%	0,00%	0,00%
5064 Garam Masala	48,18%	48,18%	0,00%	0,00%	0,00%	0,00%
5065 Orange	48,18%	48,18%	0,00%	0,00%	0,00%	0,00%
5062 Volcano	44,59%	44,59%	0,00%	0,00%	0,00%	0,00%
5066 Opera	48,18%	48,18%	0,00%	0,00%	0,00%	0,00%
5074 Midnight	44,59%	44,59%	0,00%	0,00%	0,00%	0,00%
5069 Lobelia	44,59%	44,59%	0,00%	0,00%	0,00%	0,00%
5067 Santorin	48,18%	48,18%	0,00%	0,00%	0,00%	0,00%
5068 Cobalt	48,18%	48,18%	0,00%	0,00%	0,00%	0,00%
5270 Blue Moon	44,59%	44,59%	0,00%	0,00%	0,00%	0,00%
5071 Lime	48,18%	48,18%	0,00%	0,00%	0,00%	0,00%
5072 Sycamore	48,18%	48,18%	0,00%	0,00%	0,00%	0,00%
5073 Ivy	44,59%	44,59%	0,00%	0,00%	0,00%	0,00%

Compliance to Green Building Schemes	
BREEAM (UK and international)	<p><b>BRE Green Guide Ratings:</b>  <b>Office - A rated</b>  <b>Education - A rated</b>  <b>Health Care - A + rated</b>  <b>Retail (by fashion) - A+ rated</b></p> <p>Potential contribution to following categories and credits:                      Hea 02 - Indoor air quality – minimising sources of air pollution                      Hea 05 - Acoustic Performance                      Mat 01 - Life Cycle Impacts                      Mat 05 - Designing for robustness                      Wst 01 - Construction Waste Management</p>
LEED 2009 US	<p>Potential direct or indirect contribution to following categories and credits:                      Indoor Environmental Quality                      Credit 4.1 Low Emitting Materials: Adhesive &amp; Sealants                      Credit 4.3 Low Emitting Materials: Carpet Systems                      Materials and Resources                      Credit 2.1 Construction Waste Management                      Credit 4.1 Recycled content                      Credit 5.1 Regional Materials                      Innovation and Design                      Credits 1-4 1 Pilot Credit 43, Certified Products</p>
HQE (FR)	<p>Potential direct or indirect contribution to several points within following targets:                      2. Integrated choice of products and construction materials                      3. Low site nuisance                      9. Acoustic comfort                      10. Visual comfort                      11. No unpleasant smells                      12. Sanitary quality of areas                      13. Sanitary air quality</p>
DGNB (D)	<p>Potential direct or indirect contribution to following criterion                      ENVIRONMENTAL QUALITY                      ENV1.2 Local Environmental Impact                      ECONOMIC QUALITY                      ECO1.1 Building-Related Lifecycle Costs                      ECO2.1 Efficient Use of Space                      SOCIOCULTURAL AND FUNCTIONAL QUALITY                      SOC1.2 Indoor Air Quality                      SOC1.3 Acoustic Comfort                      TECHNICAL QUALITY                      TEC1.5 Ease of Cleaning and Maintenance                      TEC1.6 Ease of Dismantling and Recycling</p>



## TacTiles™

- A smarter, more sustainable way to install carpet tiles
- No need for liquid adhesives
- Fitting tiles is quick, clean and easy and the process virtually eliminates emissions
- No damage to sub floors, and nothing to stop you lifting or moving the carpet whenever you want



## Entrance Matting

Incredibly tough, hard-wearing and practical; indoor entrance matting acts as the first line of defence to any interior by removing almost 100% of dirt, rain and mud before it's walked into your flooring.

Both of the products in our commercial entrance matting range – Barricade and Foyer – are resilient, functional, easy to maintain and stylish. And it's for these reasons that our barrier matting forms an essential part of any maintenance programme needed to keep your floorcovering looking its very best.