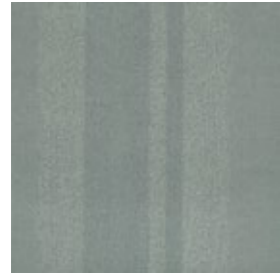


Luxury Living



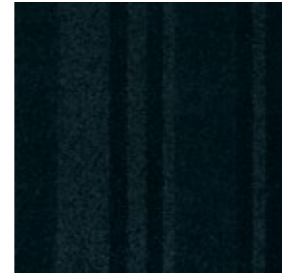
8331 Cipriani



8332 Samanna



8333 Maroma



8334 Cardinia



8335 Taranga



8336 Sedana



8337 Meliora



8338 Hanya



8339 Byamee



8340 Finnya



8341 Latanya



8342 Mabinogi



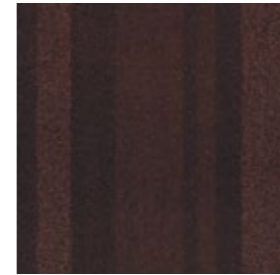
8343 Napasai



8344 Kambala



8345 Wandinja



8346 Jimbaran



8347 Taranis



8348 Fiachna



8349 Miriyan



8350 Avalon



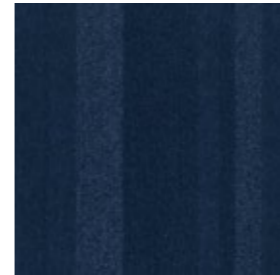
8351 Annea



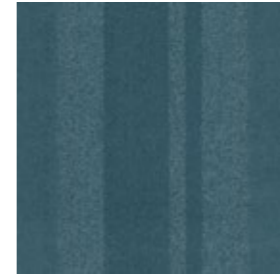
8352 Ciaran



8353 Ganan



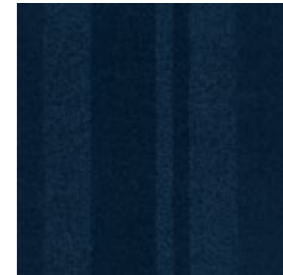
8354 Manoir



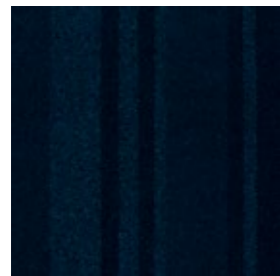
8355 Amarina



8356 Leewana



8357 Ekala



8358 Matari



8359 Kolora



8360 Jerara



8361 Sagrado



8362 Bresali



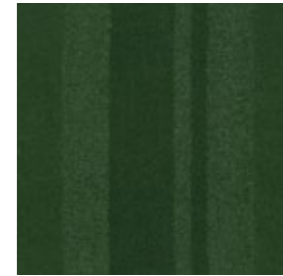
8363 Apanie



8364 Mayrah



8365 Killara



8366 Olono

Luxury Living



Case Study: Alcatel-Lucent, The Netherlands

Installed: Brick



8349 Miriyan

Installed: Brick



8362 Bresali

Installed: Brick

Technical Specifications

Product Definition	Tufted Patterned Textured Cut Tile
Konstruktion	Tuftgemusterte texturierte Veloursqualität
Descripción	Moqueta modular tufting pelo cortado liso con diseño
Description	Dalle de moquette à velours tufté coupé texturé à motifs
Type	Getufte vuilvangtegel
Descrizione	Velluto tufted strutturato

Pile Material	100% Nylon
Polfasermaterial	100% Polyamid
Composición Fibra	100% Poliamida
Composition	100% Polyamide
Poolmateriaal	100% Polyamide
Fibra	100% Poliammide
Pile Yarn Weight / Poleinsatzgewicht / Peso Fibra / Poids de fibre / Poolinzetgewicht / Peso Felpa	1365g/m ² ± 5%
Effective Pile Yarn Weight / Polschichtgewicht / Peso útil de fibra / Poids de fibre utile Effectief poolgewicht / Peso felpa effettivo	1000g/m ² ± 10%
Total Weight / Gesamtgewicht / Peso Total Poids total / Totaalgewicht / Peso Totale	5040g/m ² ± 5%
Pile Height / Polschichtdicke / Altura Fibra / Hauteur de la fibre / Poolhoogte / Altezza Felpa	6,0 mm ± 0,3 mm
Total Thickness / Gesamtdicke / Espesor Total / Epaisseur totale / Totale dikte / Altezza Totale	10,2 mm ± 0,3 mm
Gauge/Ends 10 cm / Teilung x 10 cm / Galga x 10 cm / Jauge-Rangs par 10 cm / Rijen per 10 cm / Serraggio x 10 cm	41 ± 1
Tufts per m² / Noppenzahl/m ² / Puntadas m ² / Densité du tuft par m ² / Aantal noppen per m ² / Densità Punti	172,200 ± 5%
Backing Type / Rückenkonstruktion / Soporte / Sous-couche / Ruguitvoering / Sottofondo	Graphlex®
Wear Classification / Beanspruchungsklasse / Clasificación al tráfico / Classement Gebruiksintensiteit / Resistenza all'usura	Heavy Contract (EN 1307) Class 33 / LC5

Style	60760
3m ² - 12 tiles per box (50 x 50 cm ± 0,2%)	

Radiant Panel / Schwerentflammbarkeit	(EN ISO 9239/1) Euroclass Cfl s1 (EN ISO 13501)
Hot Metal Nut	Pass, low radius of effects of ignition (BS 4790)
Dimensional Stability / Dimensionsstabilität / Estabilidad Dimensional / Stabilité dimensionnelle / Dimensioneale stabiliteit / Test Stabilità dimensionale	≤ 0,2% (ISO 2551 / EN 986)

Light Values

Product	Colour No	Colour Name	L Value*	Y Value*
Luxury Living	8331	Cipriani	56.9	24.8
	8332	Samanna	29.1	5.9
	8333	Maroma	34.1	8.0
	8334	Cardinia	17.2	2.3
	8335	Taranga	63.5	32.2
	8336	Sedana	49.9	18.3
	8337	Meliora	27.7	5.3
	8338	Hanya	29.6	6.1
	8339	Byamee	56.7	24.6
	8340	Finnya	48.4	17.1
	8341	Latanya	27.3	5.2
	8342	Mabinogi	20.4	3.1
	8343	Napasai	38.6	10.5
	8344	Kambala	28.3	5.6
	8345	Wandinja	25.1	4.4
	8346	Jimbaran	18.5	2.6
	8347	Taranis	24.2	4.2
	8348	Fiachna	21.4	3.4
	8349	Miriyán	18.8	2.7
	8350	Avalon	18.1	2.5
	8351	Annea	25.9	4.7
	8352	Ciarán	23.9	4.1
	8353	Ganan	23.6	4.0
	8354	Manoir	20.3	3.1
	8355	Amarina	41.9	12.4
	8356	Leewana	26.0	4.7
	8357	Ekala	19.0	2.8
	8358	Matari	16.7	2.2
	8359	Kolora	40.0	11.3
	8360	Jerara	45.4	14.9
	8361	Sagrado	35.0	8.5
	8362	Bresali	25.6	4.6
	8363	Apanie	43.4	13.4
	8364	Mayrah	44.9	14.5
	8365	Killara	33.6	7.8
	8366	Olonó	26.6	5.0

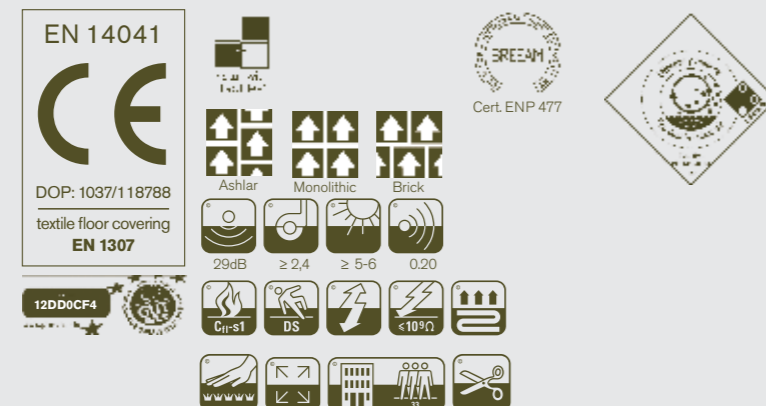
* **Light Value:** L Value = L according to CIE L*a*b* colour space, Y Value = Light Reflectance Value according to BS 8493
Lichtreflexionswert: L-Wert = L gemäß CIE L*a*b* Farbspektrum, Y-Wert = Lichtreflexionswert gemäß British Standard BS 8493

Valores de Reflectancia de Luz: Valor L = L según CIE L*a*b* espacio de color, Valor Y = Valor de reflectancia de luz según el estándar británico BS 8493

Valeurs concernant la lumière: Valeur L = L faisant référence à la méthode CIE L*a*b* pour la couleur, Valeur Y = Valeurs de réflectance de la lumière selon le British Standard BS 8493

Licht waarden: L Waarde = L volgens CIE L*a*b*kleurruimte, Y Waarde = Licht Reflectie Waarde volgens BS 8493

Indici di riflettanza alla luce: Indice L = L secondo CIE L*a*b* colour space, Indice Y = Indice di riflettanza alla luce secondo la norma BS 8493



Environmental Data Sheet

Construction			
Yarn system	100% BCF PA 6		
Backing system	Graphlex®		
Recycled Content	Total	Pre consumer	Post consumer
Product average	41,08%	41,08%	0,00%
Yarn	0,00%	0,00%	0,00%
Recycled content can be subject to differences between colours. See details for individual colours on next page.			
Carbon Footprint			
Global Warming Potential (kgs CO2 equivalents/sq meter)			
Full life-cycle carbon footprint (following our EPD results or EPD calculation method)	Raw materials and Production:	18.8 kg CO ₂ eq./m ²	
	Delivery and installation:	1.01 kg CO ₂ eq./m ²	
	Use (10 years):	2.92 kg CO ₂ eq./m ²	
	End of life (waste to energy):	9.54 kg CO ₂ eq./m ²	
	TOTAL (10 years' lifetime):	32.27 kg CO ₂ eq./m ²	
CO ₂ compensation	Carbon neutral Cool Carpet® is optional		
Manufacturing			
Location	Scherpenzeel, NL Factory is certified ISO 14001 since 1996 and ISO 9001 since 1990		
Installation Impacts			
TacTiles™	Optimised for glue-free installation with TacTiles™ connectors with virtually zero VOCs		
Installation Waste	In a typical installation* using the installation method below:		
	Monolithic - 3-4% installation waste		
	Ashlar / Brick - 3-5% installation waste		
	For reference: 2 metre wide broadloom typically generates 7-10 % installation waste		
* In a rectangular building, installed before walls.			
End-of-life			
Alternatives to landfill	Reuse: Can be cleaned and reused in a non-critical location to extend its useful life		
	Recycling: Can be returned through the Interface ReEntry scheme and be re-used as raw material in new carpet tiles		
	Waste-to-Energy: Can be incinerated in appropriate waste to energy plant		
Indoor Air Quality			
GuT (Gemeinschaft umweltfreundlicher Teppichboden)	The product passes all requirements of GuT's testing criteria regarding hazardous substances, emissions and odour. Certificate no. 24905		
CRI (Carpet & Rug Institute)	Compliant to LEED IQ 4.3 credit (tested in Eurofins to the equivalent test of the CRI Green Label Plus)		
Compliance to Green Building Schemes			
See next page to check how our products contribute to the main green building certification schemes (BREEAM, LEED, HQE and DGNB)			
Type III Environmental Product Declaration			
EPD according to ISO 14025	This product has a type III Environmental Product Declaration, EPD-IFF-20130007-CBC1-EN		

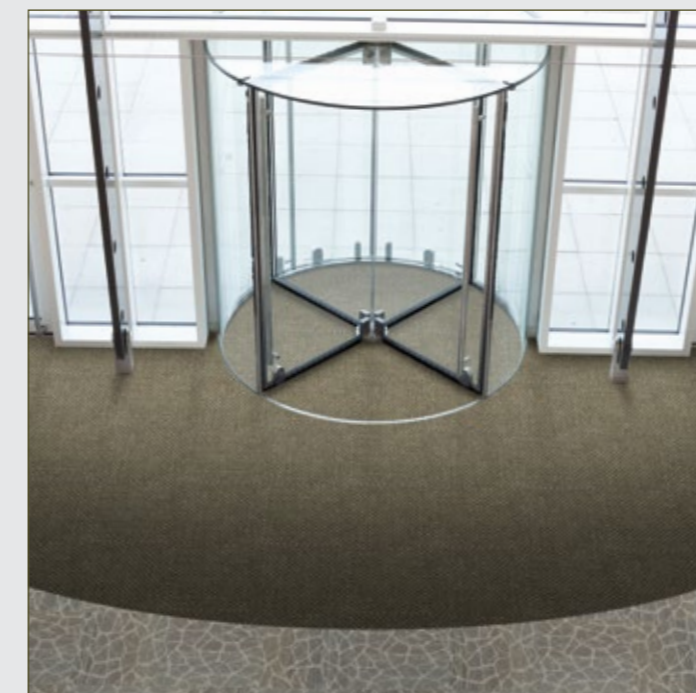
Recycled content – colour level						
Colourway	Total recycled content	Pre consumer recycled content	Post consumer recycled content	Yarn recycled content	Yarn pre consumer recycled content	Yarn post consumer recycled content
8331 Cipriani	41,08%	41,08%	0,00%	0,00%	0,00%	0,00%
8332 Samanna	41,08%	41,08%	0,00%	0,00%	0,00%	0,00%
8333 Maroma	41,08%	41,08%	0,00%	0,00%	0,00%	0,00%
8334 Cardinia	41,08%	41,08%	0,00%	0,00%	0,00%	0,00%
8335 Taranga	41,08%	41,08%	0,00%	0,00%	0,00%	0,00%
8336 Sedana	41,08%	41,08%	0,00%	0,00%	0,00%	0,00%
8337 Meliora	41,08%	41,08%	0,00%	0,00%	0,00%	0,00%
8338 Hanya	41,08%	41,08%	0,00%	0,00%	0,00%	0,00%
8339 Byamee	41,08%	41,08%	0,00%	0,00%	0,00%	0,00%
8340 Finnya	41,08%	41,08%	0,00%	0,00%	0,00%	0,00%
8341 Latanya	41,08%	41,08%	0,00%	0,00%	0,00%	0,00%
8342 Mabinogi	41,08%	41,08%	0,00%	0,00%	0,00%	0,00%
8343 Napasai	41,08%	41,08%	0,00%	0,00%	0,00%	0,00%
8344 Kambala	41,08%	41,08%	0,00%	0,00%	0,00%	0,00%
8345 Wandinja	41,08%	41,08%	0,00%	0,00%	0,00%	0,00%
8346 Jimbaran	41,08%	41,08%	0,00%	0,00%	0,00%	0,00%
8347 Taranis	41,08%	41,08%	0,00%	0,00%	0,00%	0,00%
8348 Fiachna	41,08%	41,08%	0,00%	0,00%	0,00%	0,00%
8349 Miriyan	41,08%	41,08%	0,00%	0,00%	0,00%	0,00%
8350 Avalon	41,08%	41,08%	0,00%	0,00%	0,00%	0,00%
8351 Annea	41,08%	41,08%	0,00%	0,00%	0,00%	0,00%
8352 Ciaran	41,08%	41,08%	0,00%	0,00%	0,00%	0,00%
8353 Ganan	41,08%	41,08%	0,00%	0,00%	0,00%	0,00%
8354 Manoir	41,08%	41,08%	0,00%	0,00%	0,00%	0,00%
8355 Amarina	41,08%	41,08%	0,00%	0,00%	0,00%	0,00%
8356 Leewana	41,08%	41,08%	0,00%	0,00%	0,00%	0,00%
8357 Ekala	41,08%	41,08%	0,00%	0,00%	0,00%	0,00%
8358 Matari	41,08%	41,08%	0,00%	0,00%	0,00%	0,00%
8359 Kolora	41,08%	41,08%	0,00%	0,00%	0,00%	0,00%
8360 Jerara	41,08%	41,08%	0,00%	0,00%	0,00%	0,00%
8361 Sagrado	41,08%	41,08%	0,00%	0,00%	0,00%	0,00%
8362 Bresali	41,08%	41,08%	0,00%	0,00%	0,00%	0,00%
8363 Apanie	41,08%	41,08%	0,00%	0,00%	0,00%	0,00%
8364 Mayrah	41,08%	41,08%	0,00%	0,00%	0,00%	0,00%
8365 Killara	41,08%	41,08%	0,00%	0,00%	0,00%	0,00%
8366 Olono	41,08%	41,08%	0,00%	0,00%	0,00%	0,00%

Compliance to Green Building Schemes	
BREEAM (UK and international)	<p>BRE Green Guide Ratings: Office - B Education - B Health Care - A Retail (by fashion) - A+</p> <p>Potential contribution to following categories and credits: Hea 02 - Indoor air quality – minimising sources of air pollution Hea 05 - Acoustic Performance Mat 01 - Life Cycle Impacts Mat 05 - Designing for robustness Wst 01 - Construction Waste Management</p>
LEED 2009 US	<p>Potential direct or indirect contribution to following categories and credits:</p> <p>Indoor Environmental Quality Credit 4.1 Low Emitting Materials: Adhesive & Sealants Credit 4.3 Low Emitting Materials: Carpet Systems</p> <p>Materials and Resources Credit 2.1 Construction Waste Management Credit 4.1 Recycled content Credit 5.1 Regional Materials</p> <p>Innovation and Design Credits 1-4 1 Pilot Credit 43, Certified Products</p>
HQE (FR)	<p>Potential direct or indirect contribution to several points within following targets:</p> <ol style="list-style-type: none"> 2. Integrated choice of products and construction materials 3. Low site nuisance 9. Acoustic comfort 10. Visual comfort 11. No unpleasant smells 12. Sanitary quality of areas 13. Sanitary air quality
DGNB (D)	<p>Potential direct or indirect contribution to following criterion</p> <p>ENVIRONMENTAL QUALITY ENV1.2 Local Environmental Impact</p> <p>ECONOMIC QUALITY ECO1.1 Building-Related Lifecycle Costs ECO2.1 Efficient Use of Space</p> <p>SOCIOCULTURAL AND FUNCTIONAL QUALITY SOC1.2 Indoor Air Quality SOC1.3 Acoustic Comfort</p> <p>TECHNICAL QUALITY TEC1.5 Ease of Cleaning and Maintenance TEC1.6 Ease of Dismantling and Recycling</p>



TacTiles™

- A smarter, more sustainable way to install carpet tiles
- No need for liquid adhesives
- Fitting tiles is quick, clean and easy and the process virtually eliminates emissions
- No damage to sub floors, and nothing to stop you lifting or moving the carpet whenever you want



Entrance Matting

Incredibly tough, hard-wearing and practical; indoor entrance matting acts as the first line of defence to any interior by removing almost 100% of dirt, rain and mud before it's walked into your flooring.

Both of the products in our commercial entrance matting range – Barricade and Foyer – are resilient, functional, easy to maintain and stylish. And it's for these reasons that our barrier matting forms an essential part of any maintenance programme needed to keep your floorcovering looking its very best.