



Transformation



304183 Dunes



304186 Bark



304187 Meadow



304188 Moss Garden



304191 Conifer



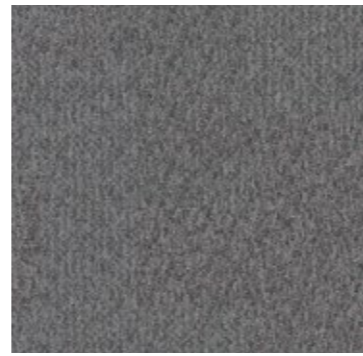
304194 Wildflower



304195 Wetland



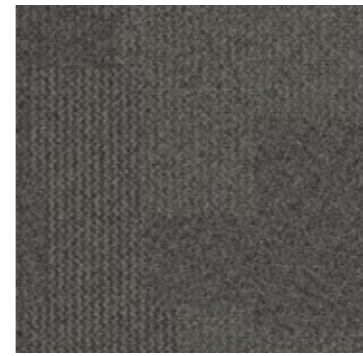
304196 Fern



304197 River



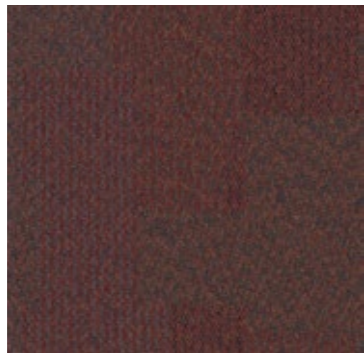
304198 Buckeye



345502 Steppe



345504 Desert



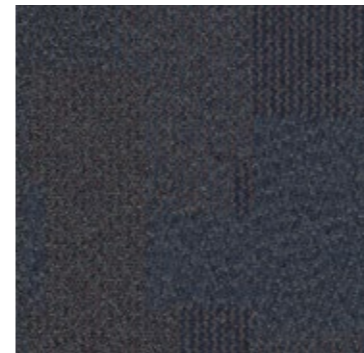
345506 Tropics



345511 Wadi



345514 Amazon



345517 Lagoon



345518 Lava



345519 Pasture



345520 Moorland



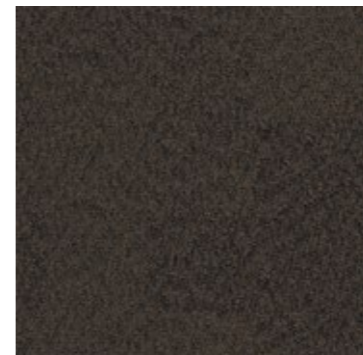
345521 Glacier



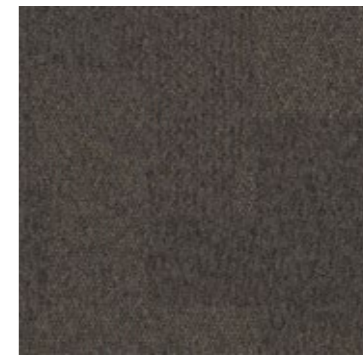
345522 Pacific



345523 Plantation



345524 Tobacco



345525 Valley

Transformation



304187 Meadow, 345524 Tobacco

Installed: Non Directional

Transformation



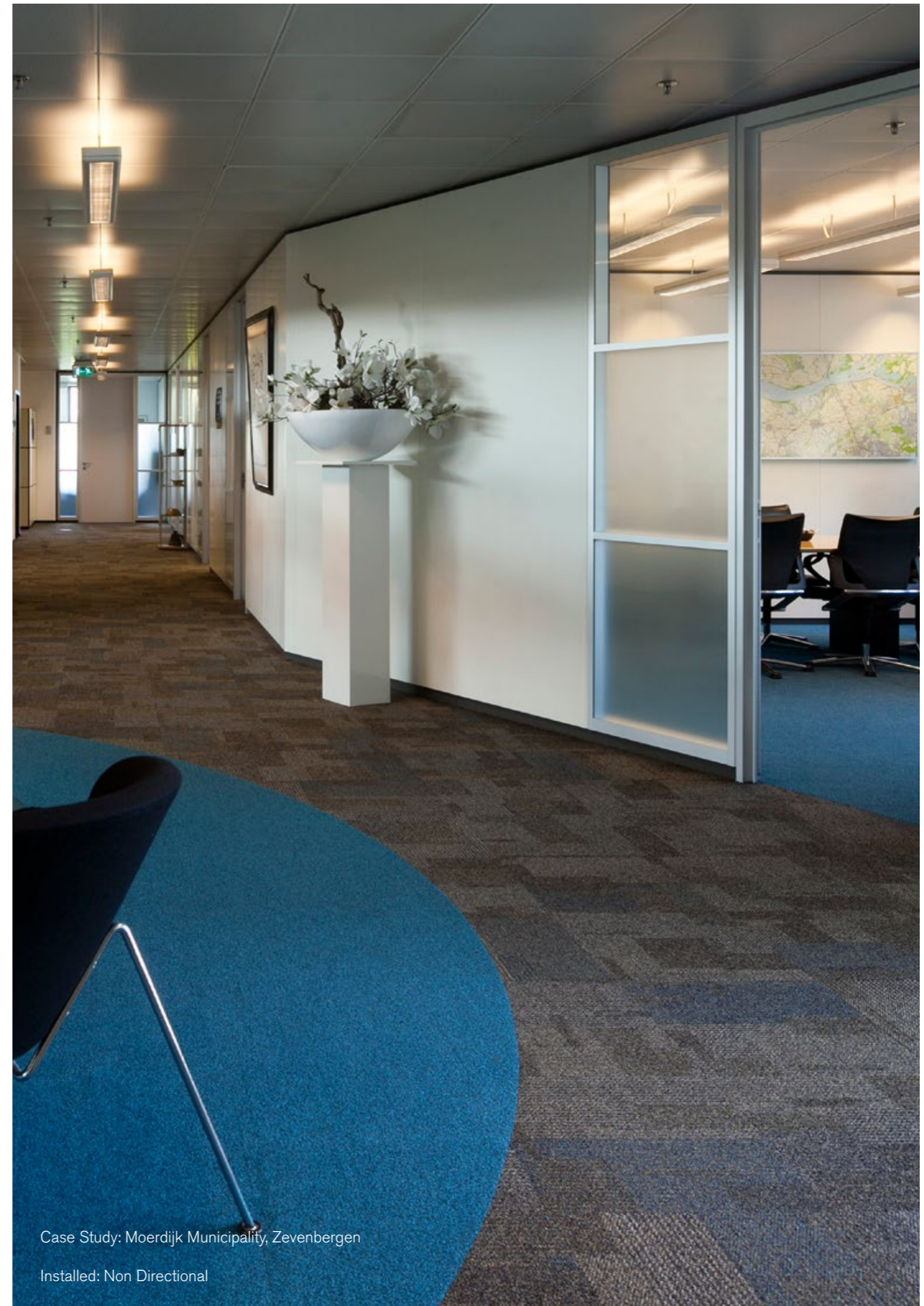
345514 Lagoon

Installed: Non Directional



Case Study: Residential Carw Centre Mr L E Visserhuis, The Hague

Installed: Non Directional



Case Study: Moerdijk Municipality, Zevenbergen

Installed: Non Directional



Case Study: Sorbonne Nouvelle University, France

Installed: Non Directional



Case Study: Birmingham City Council, UK

Installed: Non Directional

Technical Specifications

Product Definition	Tufted Patterned Structured Loop Tile
Konstruktion	Tuftgemusterte strukturierte Schlingenqualität
Descripción	Moqueta modular tufting bucle estructurado con diseño
Description	Dalle de moquette à velours tufté bouclé structuré
Type	Getufte gedessineerde gestructureerde bouclé
Descrizione	Bouclé tufted strutturato

Pile Material	100% BCF Solution Dyed Nylon contains pre-consumer recycled content
Polfasermaterial	100% Polyamid garngefärbt mit recyceltem Anteil (Prä-Konsumenten-Anteil)
Composición Fibra	100% Poliamida BCF tintada en masa con contenido reciclado pre-consumo
Composition	100% Polyamide BCF Teint en masse contenant des éléments recyclés
Poolmateriaal	100% Solution Dyed Polyamide BCF, bevat pre-consumer gerecycled content
Fibra	100% Poliammide BCF tinta in massa con contenuto riciclato pre - consumer

Pile Yarn Weight / Poleinsatzgewicht / Peso Fibra / Poids de fibre / Poolinzetgewicht / Peso Felpa	576g/m ² ± 5%
Total Weight / Gesamtgewicht / Peso Total Poids total / Totaalgewicht / Peso Totale	4494g/m ² ± 5%
Pile Height / Polschichtdicke / Altura Fibra / Hauteur de la fibre / Poolhoogte / Altezza Felpa	3,3 mm ± 0,3 mm
Total Thickness / Gesamtstärke / Espesor Total / Epaisseur totale / Totale dikte / Altezza Totale	6,7 mm ± 0,5 mm
Gauge/Ends 10 cm / Teilung x 10 cm / Galga x 10 cm / Jauge-Rangs par 10 cm / Rijen per 10 cm / Serraggio x 10 cm	1/12 – 47,2
Tufts per m² / Noppenzahl/m ² / Puntadas m ² / Densité du tuft par m ² / Aantal noppen per m ² / Densità Punti	167,560 ± 5%
Backing Type / Rückenkonstruktion / Soporte / Sous-couche / Rugitvoering / Sottofondo	Graphlex®
Wear Classification / Beanspruchungsklasse / Clasificación al tráfico / Classement Gebruiksintensiteit / Resistenza all'usura	Heavy Contract (EN 1307) Class 33 / LC2

Style	34603
4m ² - 16 tiles per box (50 x 50 cm ± 0,15%)	
Radiant Panel / Schwerentflammbarkeit	(EN ISO 9239/1) Euroclass Bfl s1 (EN ISO 13501) (NFP 92-506) (PV No.RA 01-304) M3
Hot Metal Nut	Pass, low radius of effects of ignition (BS 4790) ≤ 0,2% (ISO 2551 / EN 986)

Dimensional Stability / Dimensionsstabilität	
Estabilidad Dimensional / Stabilité dimensionnelle	
Dimensionale stabiliteit / Test Stabilità dimensionale	

Sound Absorption					
125Hz	250Hz	500Hz	1000Hz	2000Hz	4000Hz
0.01	0.05	0.08	0.22	0.34	0.44



Light Values

Product	Colour No	Colour Name	L Value*	Y Value*
Transformation	304183	Dunes	40.9	11.8
	304185	Pollen	33.8	7.9
	304186	Bark	29.0	5.8
	304187	Meadow	50.6	18.9
	304188	Moss Garden	27.2	5.2
	304189	Tundra	47.3	16.3
	304191	Conifer	36.8	9.5
	304194	Wildflower	31.7	6.9
	304195	Wetland	31.7	6.9
	304196	Fern	29.1	5.9
	304197	River	39.0	10.7
	304198	Buckeye	25.8	4.7
	345502	Steppe	34.4	8.2
	345504	Desert	43.1	13.2
	345505	Pampas	41.5	12.2
	345506	Tropics	24.7	4.3
	345507	Highlands	26.2	4.8
	345508	Reef	37.0	9.5
	345511	Wadi	44.7	14.4
	345514	Amazon	28.9	5.8
	345517	Lagoon	26.6	4.9
	345518	Lava	32.5	7.3
	345519	Pasture	33.9	7.9
	345520	Moorland	29.7	6.1
	345521	Glacier	38.9	10.6
	345522	Pacific	29.8	6.1
	345523	Plantation	37.9	10.0
	345524	Tobacco	27.6	5.3
	345525	Valley	31.4	6.8

* **Light Value:** L Value = L according to CIE L*a*b* colour space, Y Value = Light Reflectance Value according to BS 8493
Lichtreflexionswerte: L-Wert = L gemäß CIE L*a*b* Farbspektrum, Y-Wert = Lichtreflexionswert gemäß British Standard BS 8493
Valores de Reflectancia de Luz: Valor L = L según CIE L*a*b* espacio de color, Valor Y = Valor de reflectancia de luz según el estándar británico BS 8493
Valeurs concernant la lumière: Valeur L = L faisant référence à la méthode CIE L*a*b* pour la couleur, Valeur Y = Valeurs de réflectance de la lumière selon le British Standard BS 8493
Licht waarden: L Waarde = L volgens CIE L*a*b*kleurruimte, Y Waarde = Licht Reflectie Waarde volgens BS 8493
Indici di riflettanza alla luce: Indice L = L secondo CIE L*a*b* colour space, Indice Y = Indice di riflettanza alla luce secondo la norma BS 8493

Environmental Data Sheet

Construction			
Yarn system	100% BCF Solution Dyed PA 6,6		
Backing system	Graphlex®		
Recycled Content	Total Recycled Content	Pre consumer	Post consumer
Product average	44,17%	44,17%	0,00%
Yarn	22,10%	22,13%	0,00%
Recycled content can be subject to differences between colours. See details for individual colours on next page.			
Carbon Footprint			
Global Warming Potential (kgs CO2 equivalents/sq meter)			
Full life-cycle carbon footprint (following our EPD results or EPD calculation method)	Raw materials and Production:	9.4 kg CO ₂ eq./m ²	
	Delivery and installation:	0.3 kg CO ₂ eq./m ²	
	Use (10 years):	2 kg CO ₂ eq./m ²	
	End of life (waste to energy):	4.8 kg CO ₂ eq./m ²	
	TOTAL (10 years' lifetime):	16.5 kg CO ₂ eq./m ²	
CO ₂ compensation	Carbon neutral Cool Carpet® is standard		
Manufacturing			
Location	Scherpenzeel, NL		
	Factory is certified ISO 14001 since 1996 and ISO 9001 since 1990		
Installation Impacts			
TacTiles™	Optimised for glue-free installation with TacTiles™ connectors with virtually zero VOCs		
Installation Waste	In a typical installation* using the installation method below:		
	Non-directional – 1-2% installation waste		
	For reference: 2 metre wide broadloom typically generates 7-10 % installation waste		
* In a rectangular building, installed before walls.			
Indoor Air Quality			
GUT (Gemeinschaft umweltfreundlicher Teppichboden)	The product passes all requirements of GUT's testing criteria regarding hazardous substances, emissions and odour. GUT PRODIS Certificate no. FB53AADO		
CRI (Carpet & Rug Institute)	Compliant to LEED IQ 4.3 credit (tested in Eurofins to the equivalent test of the CRI Green Label Plus)		
Compliance to Green Building Schemes			
See next page to check how our products contribute to the main green building certification schemes (BREEAM, LEED, HQE and DGNB)			
Type III Environmental Product Declaration			
EPD according to ISO 14025	This product has a type III Environmental Product Declaration, EPD-IFF-2011711-E		

Recycled content – colour level						
Colourway	Total recycled content	Pre-consumer recycled content	Post-consumer recycled content	Yarn recycled content	Pre-consumer yarn recycled content	Post-consumer yarn recycled content
304183 Dunes	44,14%	44,14%	0,00%	21,83%	21,83%	0,00%
304186 Bark	44,35%	44,35%	0,00%	23,51%	22,26%	0,00%
304187 Meadow	44,05%	44,05%	0,00%	21,17%	23,51%	0,00%
304188 Moss Garden	44,36%	44,36%	0,00%	23,58%	21,17%	0,00%
304191 Conifer	44,18%	44,18%	0,00%	22,20%	23,58%	0,00%
304194 Wildflower	44,21%	44,21%	0,00%	22,40%	21,29%	0,00%
304195 Wetland	44,15%	44,15%	0,00%	21,94%	22,20%	0,00%
304196 Fern	44,28%	44,28%	0,00%	22,99%	22,40%	0,00%
304197 River	44,09%	44,09%	0,00%	21,48%	21,94%	0,00%
304198 Buckeye	44,31%	44,31%	0,00%	23,22%	22,99%	0,00%
345502 Steppe	44,15%	44,15%	0,00%	21,95%	21,48%	0,00%
345504 Desert	44,10%	44,10%	0,00%	21,54%	23,22%	0,00%
345506 Tropics	44,23%	44,23%	0,00%	22,54%	21,54%	0,00%
345511 Wadi	44,07%	44,07%	0,00%	21,32%	21,44%	0,00%
345514 Amazon	44,22%	44,22%	0,00%	22,48%	22,54%	0,00%
345517 Lagoon	44,20%	44,20%	0,00%	22,34%	21,89%	0,00%
345518 Lava	44,21%	44,21%	0,00%	22,39%	18,37%	0,00%
345519 Pasture	43,96%	43,96%	0,00%	20,45%	23,50%	0,00%
345520 Moorland	44,24%	44,24%	0,00%	22,68%	23,64%	0,00%
345521 Glacier	44,12%	44,12%	0,00%	21,72%	22,12%	0,00%
345522 Pacific	44,14%	44,14%	0,00%	21,89%	21,20%	0,00%
345523 Plantation	43,69%	43,69%	0,00%	18,37%	22,48%	0,00%
345524 Tobacco	44,35%	44,35%	0,00%	23,50%	22,68%	0,00%
345525 Valley	44,27%	44,27%	0,00%	22,91%	21,72%	0,00%

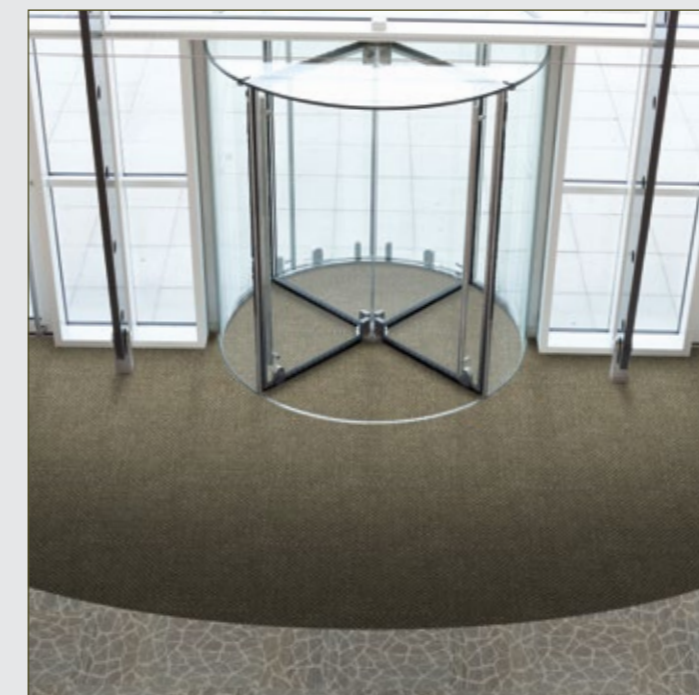
Compliance to Green Building Schemes

BREEAM (UK and international)	<p>BRE Green Guide Ratings: Office - A rated Education - A rated Health Care - A rated Retail (by fashion) - A+ rated Potential contribution to following categories and credits: Hea 02 - Indoor air quality – minimising sources of air pollution Hea 05 - Acoustic Performance Mat 01 - Life Cycle Impacts Mat 05 - Designing for robustness Wst 01 - Construction Waste Management</p>
LEED 2009 US	<p>Potential direct or indirect contribution to following categories and credits: Indoor Environmental Quality Credit 4.1 Low Emitting Materials: Adhesive & Sealants Credit 4.3 Low Emitting Materials: Carpet Systems Materials and Resources Credit 2.1 Construction Waste Management Credit 4.1 Recycled content Credit 5.1 Regional Materials Innovation and Design Credits 1-4 1 Climate Neutral Products Credits 1-4 1 Pilot Credit 43, Certified Products</p>
HQE (FR)	<p>Potential direct or indirect contribution to several points within following targets: 2. Integrated choice of products and construction materials 3. Low site nuisance 9. Acoustic comfort 10. Visual comfort 11. No unpleasant smells 12. Sanitary quality of areas 13. Sanitary air quality</p>
DGNB (D)	<p>Potential direct or indirect contribution to following criterion ENVIRONMENTAL QUALITY ENV1.2 Local Environmental Impact ECONOMIC QUALITY ECO1.1 Building-Related Lifecycle Costs ECO2.1 Efficient Use of Space SOCIOCULTURAL AND FUNCTIONAL QUALITY SOC1.2 Indoor Air Quality SOC1.3 Acoustic Comfort TECHNICAL QUALITY TEC1.5 Ease of Cleaning and Maintenance TEC1.6 Ease of Dismantling and Recycling</p>



TacTiles™

- A smarter, more sustainable way to install carpet tiles
- No need for liquid adhesives
- Fitting tiles is quick, clean and easy and the process virtually eliminates emissions
- No damage to sub floors, and nothing to stop you lifting or moving the carpet whenever you want



Entrance Matting

Incredibly tough, hard-wearing and practical; indoor entrance matting acts as the first line of defence to any interior by removing almost 100% of dirt, rain and mud before it's walked into your flooring.

Both of the products in our commercial entrance matting range – Barricade and Foyer – are resilient, functional, easy to maintain and stylish. And it's for these reasons that our barrier matting forms an essential part of any maintenance programme needed to keep your floorcovering looking its very best.