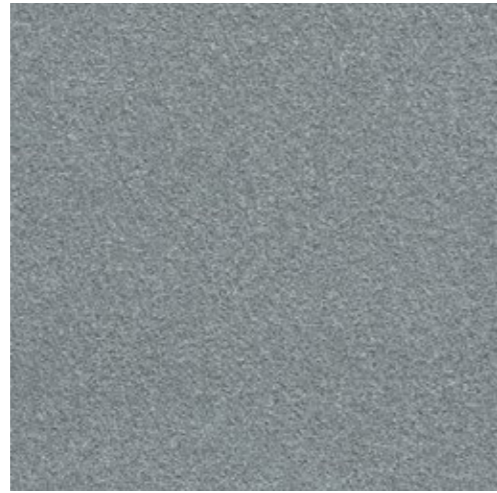


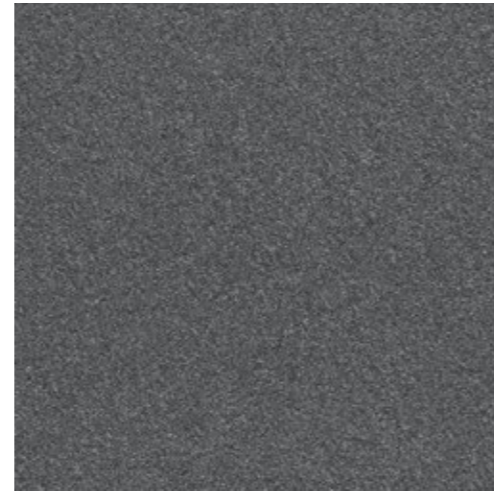
100%
Recycled
Nylon

Biosfera - Veiour

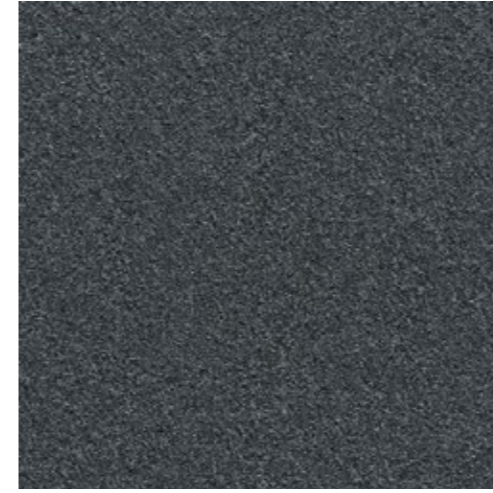
Interface®



7191 Bianco Christal



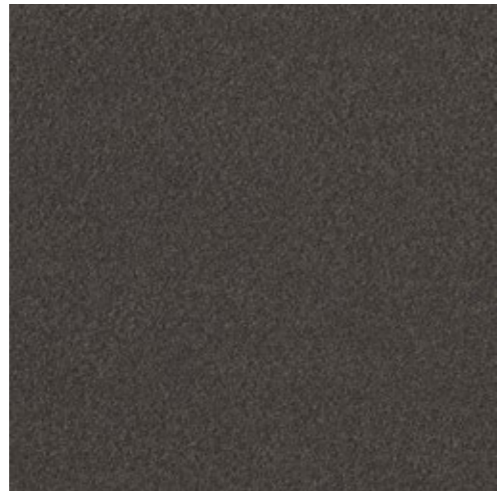
7192 Bardiglio



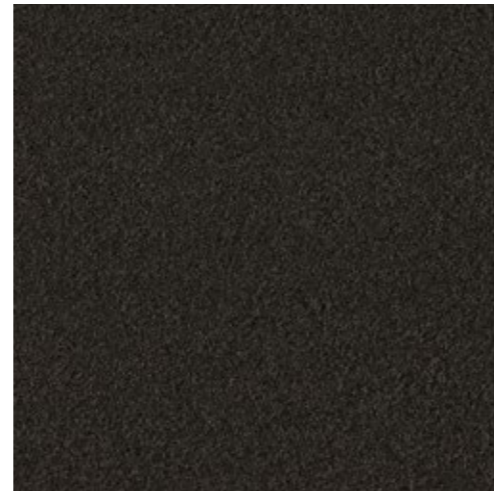
7194 Polaris



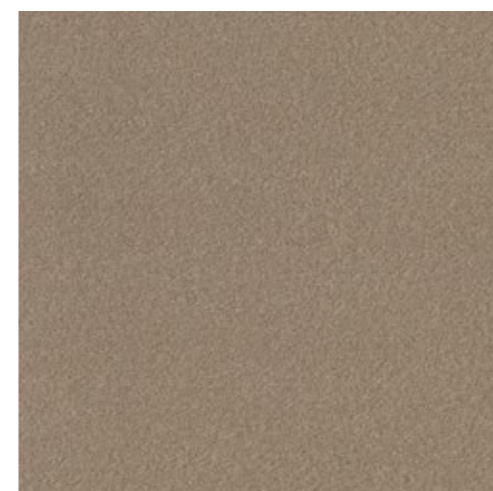
7987 Paglia



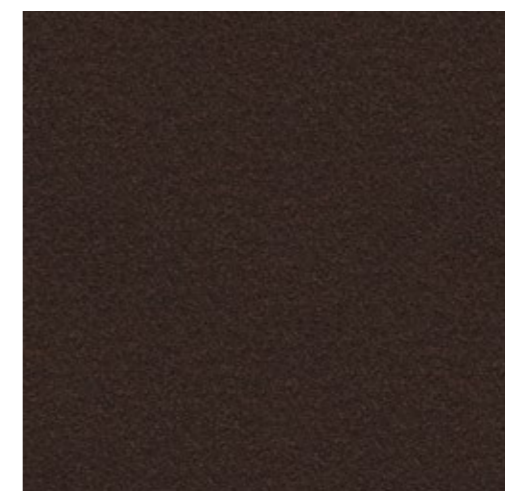
7988 Orca Brasil



7989 Nero Angola



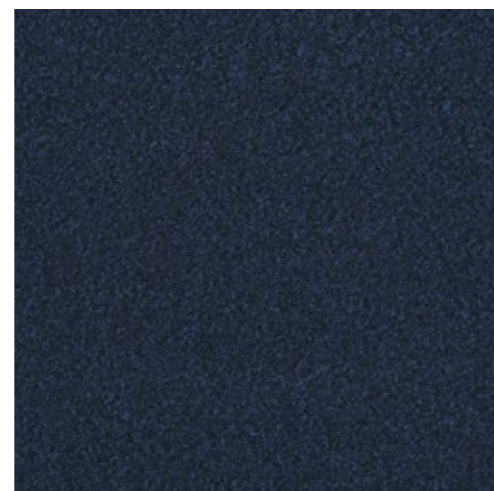
7991 Amaretto



7992 Travertino Noce



7993 Granato



7996 Lapizlazulo



7997 Spinelle Verde



7998 Chiara di Luna





7993 Granato & 7991 Amaretto

Installed: Monolithic



7191 Bianco Christal & 7192 Bardiglio

Installed: Monolithic

Product Definition	Tufted Plain Level Cut Tile
Konstruktion	Getuftete Veloursqualität
Descripción	Moqueta modular tufting pelo cortado aspecto velour
Description	Dalle de moquette à velours tufté coupé rasé
Type	Getufte velours
Descrizione	Velluto tufted piano

Pile Material	100% Recycled BCF Solution Dyed Nylon contains pre and postconsumer recycled content
Polfasermaterial	100% recyceltes Polyamid, enthält Anteile pre- und post-consumer recycelten Materials
Composición Fibra	100% Poliamida reciclada BCF tintada en masa con contenido reciclado pre y post consumo
Composition	Fibre polyamide BCF 100% recyclée teint en masse, contenant des éléments recyclés pré et post consommation
Poolmateriaal	100% gerecycled Solution Dyed Polyamide BCF, bevat 100% pre- en post-consumer gerecycled content
Fibra	100% Poliammide BCF riciclata tinta in massa con contenuto riciclato pre- e post -consumer

Pile Yarn Weight / Poleinsatzgewicht / Peso Fibra / Poids de fibre / Poolinzetgewicht / Peso Felpa	610g/m ² ± 5%
Effective pile yarn weight / Polschichtgewicht / Peso útil de fibra / Poids de fibre utile / Effectief poolgewicht / Peso felpa effettivo	310g/m ² ± 10%
Total Weight / Gesamtgewicht / Peso Total Poids total / Totaalgewicht / Peso Totale	4309g/m ² ± 5%
Pile Height / Polschichtdicke / Altura Fibra / Hauteur de la fibre / Poolhoogte / Altezza Felpa	1,9 mm ± 0,3 mm
Total Thickness / Gesamtdicke / Espesor Total / Epaisseur totale / Totale dikte / Altezza Totale	5,2 mm ± 0,3 mm
Gauge/Ends 10 cm / Teilung x 10 cm / Galga x 10 cm / Jauge-Rangs par 10 cm / Rijen per 10 cm / Serraggio x 10 cm	5/64 – 50,4
Tufts per m² / Noppenzahl/m ² / Puntadas m ² / Densité du tuft par m ² / Aantal noppen per m ² / Densità Punti	217,300 ± 5%
Backing Type / Rückenkonstruktion / Soporte / Sous-couche / Ruguitvoering / Sottofondo	Graphlex®
Wear Classification / Beanspruchungsklasse / Clasificación al tráfico / Classement Gebruiksintensiteit / Resistenza all'usura	Heavy Contract (EN 1307) Class 33 / LC1

Style	60719
5m ² - 20 tiles per box (50 x 50 cm ± 0,2%)	

Radiant Panel / Schwerentflammbarkeit / Hot Metal Nut	(EN ISO 9239/1) Euroclass Cf1 s1 (EN ISO 13501) Pass, low radius of effects of ignition (BS 4790)
Dimensional Stability / Dimensionsstabilität / Estabilidad Dimensional / Stabilité dimensionnelle / Dimensionele stabiliteit / Test Stabilità dimensionale	≤ 0,2% (ISO 2551)

Sound Absorption					
125Hz	250Hz	500Hz	1000Hz	2000Hz	4000Hz
0.00	0.02	0.03	0.10	0.23	0.32



Light Value

Product	Colour No	Colour Name	L Value*	Y Value*
Biosfera Velour	7191	Bianco Christal	48.5	17.2
	7192	Bardiglio	36.5	9.3
	7194	Polaris	28.2	5.5
	7987	Paglia	53.1	21.2
	7988	Orco Brasil	27.7	5.4
	7989	Nero Angola	23.5	3.9
	7991	Amaretto	48.1	16.9
	7992	Travertino Noce	21.6	3.4
	7993	Granato	28.2	5.5
	7996	Lapizlazulo	21.4	3.4
	7997	Spianle Verde	47.4	16.4
	7998	Chiara di Luna	27.3	5.2

* **Light Value:** L Value = L according to CIE L*a*b* colour space, Y Value = Light Reflectance Value according to BS 8493
Lichtreflexionswerte: L-Wert = L gemäß CIE L*a*b* Farbspektrum, Y-Wert = Lichtreflexionswert gemäß British Standard BS 8493
Valores de Reflectancia de Luz: Valor L= L según CIE L*a*b* espacio de color, Valor Y = Valor de reflectancia de luz según el estándar británico BS 8493
Valeurs concernant la lumière: Valeur L = L faisant référence à la méthode CIE L*a*b* pour la couleur, Valeur Y = Valeurs de réflectance de la lumière selon le British Standard BS 8493
Licht waarden: L Waarde = L volgens CIE L*a*b*kleurruimte, Y Waarde = Licht Reflectie Waarde volgens BS 8493
Indici di riflettanza alla luce: Indice L= L secondo CIE L*a*b* colour space, IndiceY= Indice di riflettanza alla luce secondo la norma BS 8493

Environmental Data Sheet

Construction			
Yarn system	100% BCF Solution Dyed PA 6		
Backing system	Graphlex®		
Recycled Content	Total	Pre consumer recycled content	Post consumer recycled content
Product average	62,24%	55,22%	7,01%
Yarn average	100,00%	50,00%	50,00%
Recycled content can be subject to differences between colours. See details for individual colours on next page.			
Carbon Footprint			
Global Warming Potential (kgs CO ₂ equivalents/sq meter)			
Full life-cycle carbon footprint (following our EPD results or EPD calculation method)	Raw materials and Production:	6.75 kg CO ₂ eq./m ²	
	Delivery and installation:	0.65 kg CO ₂ eq./m ²	
	Use (10 years):	2.85 kg CO ₂ eq./m ²	
	End of Life (Waste to Energy):	8.20 kg CO ₂ eq./m ²	
	TOTAL :	18.45 kg CO₂ eq./m²	
CO ₂ compensation	Carbon neutral Cool Carpet® is standard		
Manufacturing			
Location	Scherpenzeel, NL		
	Factory is certified ISO 14001 since 1996 and ISO 9001 since 1990		
Installation Impacts			
TacTiles™	Optimised for glue-free installation with TacTiles™ connectors with virtually zero VOCs included as standard		
	In a typical installation* using the installation method below:		
	Quarter turn – 3-4% installation waste		
Installation Waste	Monolithic - 3-4% installation waste		
	For reference: 2 metre wide broadloom typically generates 7-10 % installation waste		
	* In a rectangular building, installed before walls.		
End-of-life			
Alternatives to landfill	Reuse: Can be cleaned and reused in a non-critical location to extend its useful life		
	Recycling: Can be returned through the Interface ReEntry scheme and be re-used as raw material in new carpet tiles		
	Waste-to-Energy: Can be incinerated in appropriate waste to energy plant		
Indoor Air Quality			
GUT (Gemeinschaft umweltfreundlicher Teppichboden)	The product passes all requirements of GUT's testing criteria regarding hazardous substances, emissions and odour. GUT PRODIS Certificate no. D30A6AA3		
CRI (Carpet & Rug Institute)	Compliant to LEED IQ 4.3 credit (tested in Eurofins to the equivalent test of the CRI Green Label Plus)		
Compliance to Green Building Schemes			
	See next page to check how our products contribute to the main green building certification schemes (BREEAM, LEED, HQE and DGNB)		
Type III Environmental Product Declaration			
EPD according to ISO 14025	This product has a type III Environmental Product Declaration, EPD-IFF-2012821-E		

Recycled content – colour level						
Colourway	Total recycled content %	Total pre consumer recycled content %	Total post consumer recycled content %	Yarn recycled content %	Yarn pre consumer recycled content %	Yarn post consumer recycled content %
7191 Bianco Christal	62,24%	55,22%	7,01%	100,00%	50,00%	50,00%
7192 Bardiglio	62,24%	55,22%	7,01%	100,00%	50,00%	50,00%
7194 Polaris	62,24%	55,22%	7,01%	100,00%	50,00%	50,00%
7987 Paglia	62,24%	55,22%	7,01%	100,00%	50,00%	50,00%
7988 Orco Brasil	62,24%	55,22%	7,01%	100,00%	50,00%	50,00%
7989 Nero Angola	62,24%	55,22%	7,01%	100,00%	50,00%	50,00%
7991 Amaretto	62,24%	55,22%	7,01%	100,00%	50,00%	50,00%
7992 Travertino Noce	62,24%	55,22%	7,01%	100,00%	50,00%	50,00%
7993 Granato	62,24%	55,22%	7,01%	100,00%	50,00%	50,00%
7996 Lapizlazulo	62,24%	55,22%	7,01%	100,00%	50,00%	50,00%
7997 Spinelle Verde	62,24%	55,22%	7,01%	100,00%	50,00%	50,00%
7998 Chiara Di Luna	62,24%	55,22%	7,01%	100,00%	50,00%	50,00%

Compliance to Green Building Schemes	
BREEAM (UK and international)	BRE Green Guide Ratings: Office - A Education - A+ Health Care - A+ Retail (by fashion) - A+ Potential contribution to following categories and credits: Hea 02 - Indoor air quality – minimising sources of air pollution Hea 05 - Acoustic Performance Mat 01 - Life Cycle Impacts Mat 05 - Designing for robustness Wst 01 - Construction Waste Management
LEED 2009 US	Potential direct or indirect contribution to following categories and credits: Indoor Environmental Quality Credit 4.1 Low Emitting Materials: Adhesive & Sealants Credit 4.3 Low Emitting Materials: Carpet Systems Materials and Resources Credit 2.1 Construction Waste Management Credit 4.1 Recycled content Credit 5.1 Regional Materials Innovation and Design Credits 1-4 1 Climate Neutral Products Credits 1-4 1 Pilot Credit 43, Certified Products
HQE (FR)	Potential direct or indirect contribution to several points within following targets: 2. Integrated choice of products and construction materials 3. Low site nuisance 9. Acoustic comfort 10. Visual comfort 11. No unpleasant smells 12. Sanitary quality of areas 13. Sanitary air quality
DGNB (D)	Potential direct or indirect contribution to following criterion ENVIRONMENTAL QUALITY ENV1.2 Local Environmental Impact ECONOMIC QUALITY ECO1.1 Building-Related Lifecycle Costs ECO2.1 Efficient Use of Space SOCIOCULTURAL AND FUNCTIONAL QUALITY SOC1.2 Indoor Air Quality SOC1.3 Acoustic Comfort

THIS DATA CAN BE USED TO COMPARE CARPET PRODUCTS WITHIN YOUR PORTFOLIO. COMPARISON WITH OTHER PRODUCTS WOULD REQUIRE USE OF SAME METHODOLOGIES. Interface reserves the right to change the data included on the Environmental Data Sheet. Information updated 14th February 2013.



TacTiles™

- A smarter, more sustainable way to install carpet tiles
- No need for liquid adhesives
- Fitting tiles is quick, clean and easy and the process virtually eliminates emissions
- No damage to sub floors, and nothing to stop you lifting or moving the carpet whenever you want



Entrance Matting

Incredibly tough, hard-wearing and practical; indoor entrance matting acts as the first line of defence to any interior by removing almost 100% of dirt, rain and mud before it's walked into your flooring.

Both of the products in our commercial entrance matting range – Barricade and Foyer – are resilient, functional, easy to maintain and stylish. And it's for these reasons that our barrier matting forms an essential part of any maintenance programme needed to keep your floorcovering looking its very best.